

# **Superluminescent LED Source (with Integrated Optical Circulator)**

## **DL-BP1 Series (series)**

### **64-bit USB Driver Installation Manual**

U.M #: ILM-BP1-SFW0001  
Revision A

This document is the property of DenseLight Semiconductors Pte Ltd and contains confidential and proprietary information of DenseLight Semiconductors Pte Ltd. neither it nor the information contained therein shall be disclosed to others or used by other except as authorized by DenseLight Semiconductors Pte Ltd in writing. DenseLight Semiconductors reserves the right to make product design or specifications changes without notice.

6 Changi North Street 2, SINGAPORE 498831  
e-mail: [info@denselight.com](mailto:info@denselight.com) ; website: [www.denselight.com](http://www.denselight.com)  
Tel. 065-6415-7989 ; Fax. 065-6415-4465

## TABLE OF CONTENTS

---

1. BP1 USB Digitally Signed Driver Installation.....  
For end users who are installing the driver into their system for the first time.
2. BP1 USB Digitally Signed Driver Update .....  
For end users who have installed the previous unsigned version of the BP1 driver

This document is the property of DenseLight Semiconductors Pte Ltd and contains confidential and proprietary information of DenseLight Semiconductors Pte Ltd. neither it nor the information contained therein shall be disclosed to others or used by other except as authorized by DenseLight Semiconductors Pte Ltd in writing. DenseLight Semiconductors reserves the right to make product design or specifications changes without notice.

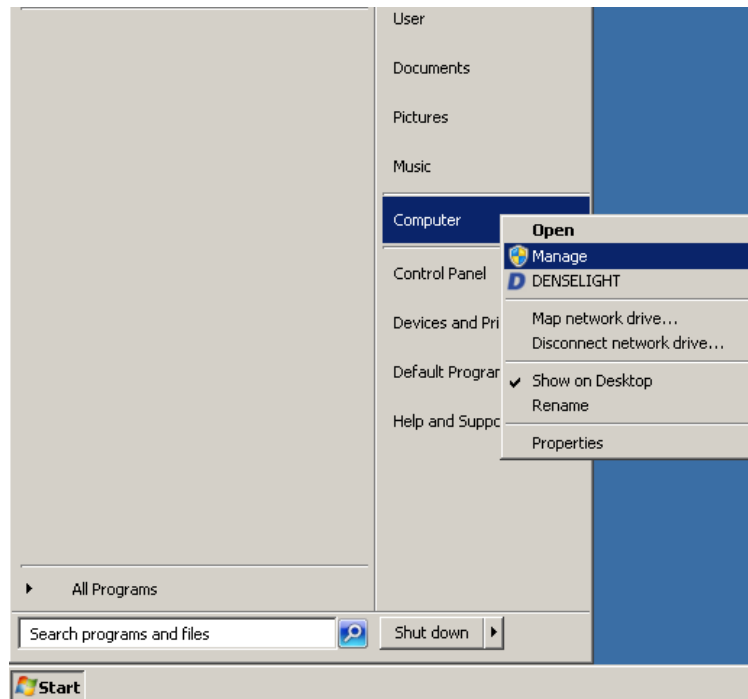
6 Changi North Street 2, SINGAPORE 498831  
e-mail: [info@denselight.com](mailto:info@denselight.com) ; website: [www.denselight.com](http://www.denselight.com)  
Tel. 065-6415-7989 ; Fax. 065-6415-4465

## BP1 USB Digitally Signed Driver Installation

For end users who are installing the BP1 signed driver into their system for the first time.

**Step 1:** Plug in USB Cable from BP1 to PC, and power on the BP1

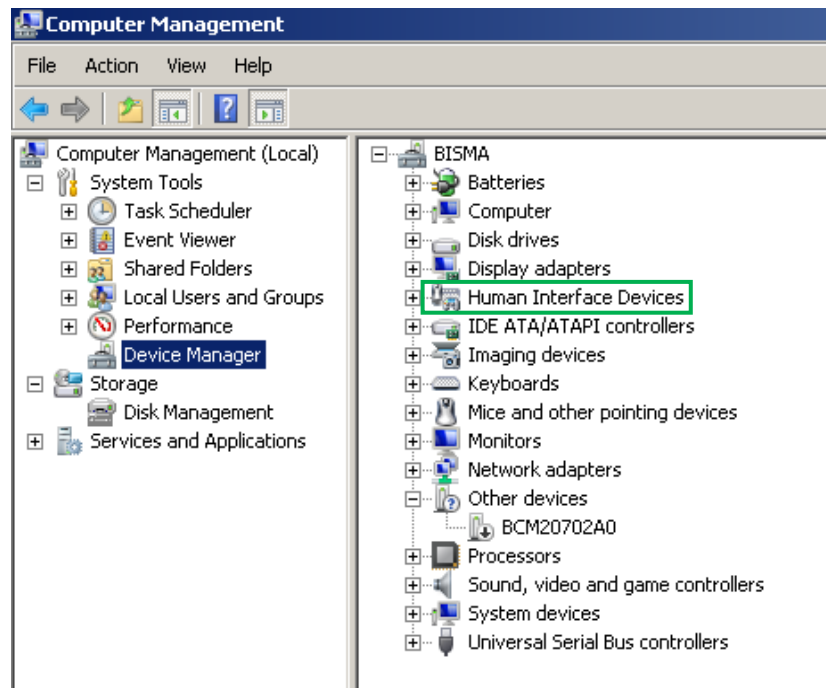
**Step 2:** Right-click **My Computer** and select the **Manage** menu item



This document is the property of DenseLight Semiconductors Pte Ltd and contains confidential and proprietary information of DenseLight Semiconductors Pte Ltd. neither it nor the information contained therein shall be disclosed to others or used by other except as authorized by DenseLight Semiconductors Pte Ltd in writing. DenseLight Semiconductors reserves the right to make product design or specifications changes without notice.

6 Changi North Street 2, SINGAPORE 498831  
e-mail: [info@denselight.com](mailto:info@denselight.com) ; website: [www.denselight.com](http://www.denselight.com)  
Tel. 065-6415-7989 ; Fax. 065-6415-4465

**Step 3:** In the **Computer Management** Window, select **Device Manager**

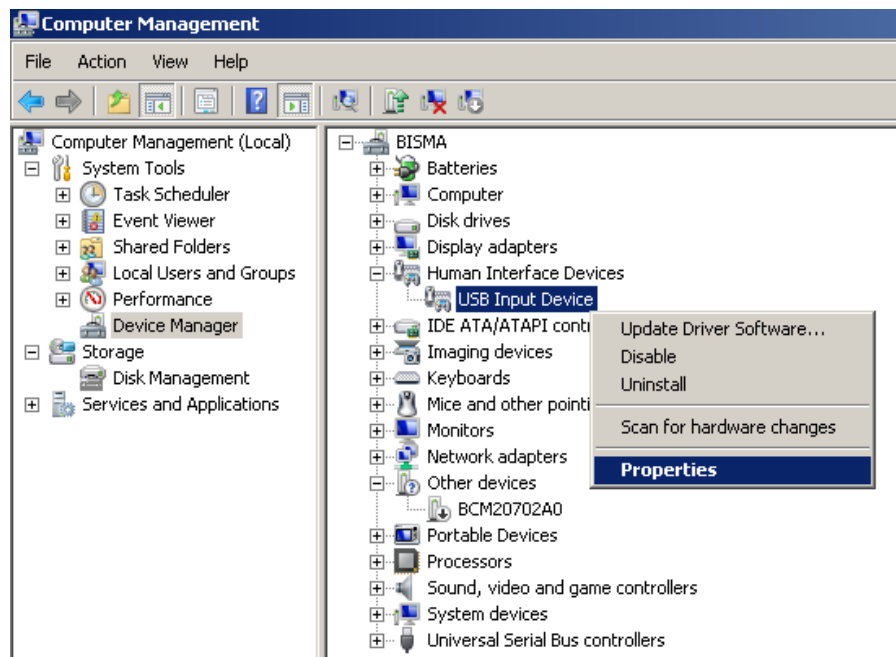


This document is the property of DenseLight Semiconductors Pte Ltd and contains confidential and proprietary information of DenseLight Semiconductors Pte Ltd. neither it nor the information contained therein shall be disclosed to others or used by other except as authorized by DenseLight Semiconductors Pte Ltd in writing. DenseLight Semiconductors reserves the right to make product design or specifications changes without notice.

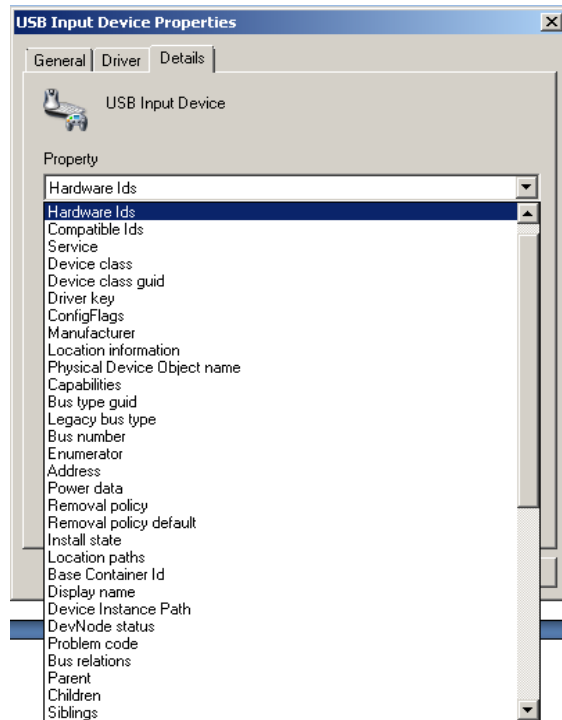
6 Changi North Street 2, SINGAPORE 498831  
e-mail: [info@denselight.com](mailto:info@denselight.com) ; website: [www.denselight.com](http://www.denselight.com)  
Tel. 065-6415-7989 ; Fax. 065-6415-4465

**Step 4:** Under Human Interface Device, look for **USB Input Device**; right click and select Properties

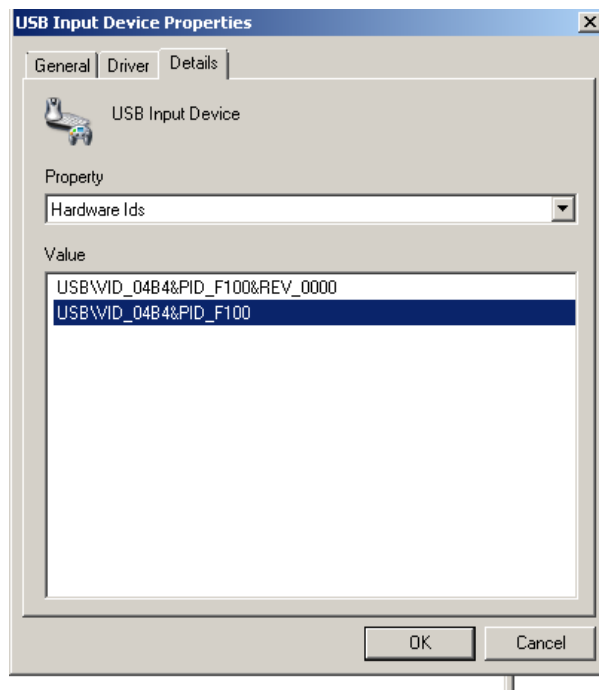
**Note:** Please select USB Input Device, **NOT** HID Device



**Step 5:** On the USB Input Device Properties, select Details Tab and choose Hardware Ids



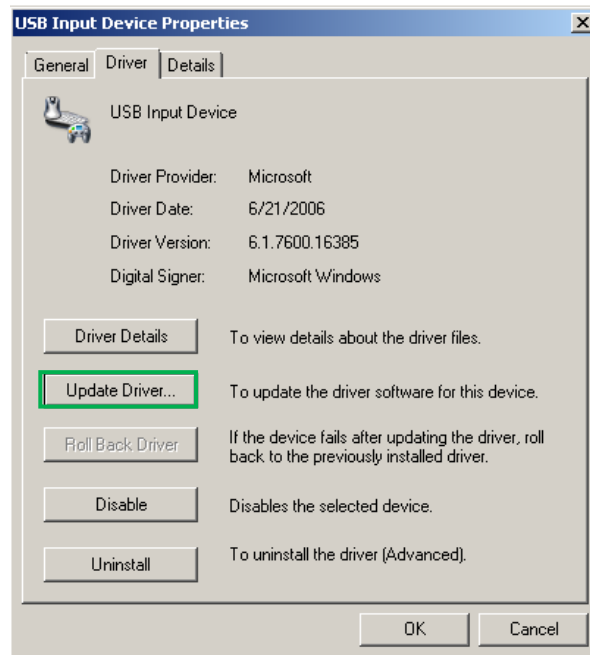
**Step 6:** Make sure Vendor ID 04B4 and Product ID F100 are available.



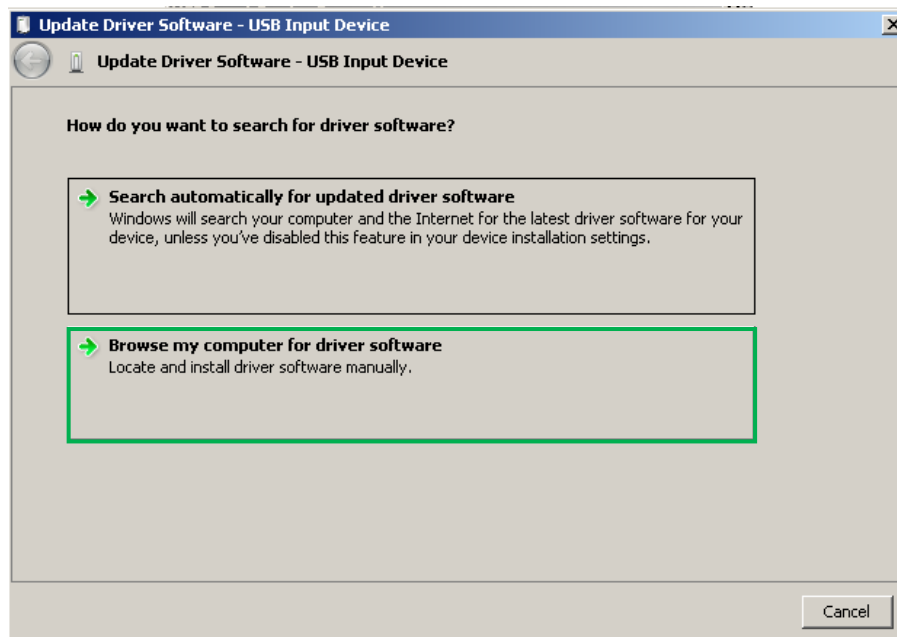
This document is the property of DenseLight Semiconductors Pte Ltd and contains confidential and proprietary information of DenseLight Semiconductors Pte Ltd. neither it nor the information contained therein shall be disclosed to others or used by other except as authorized by DenseLight Semiconductors Pte Ltd in writing. DenseLight Semiconductors reserves the right to make product design or specifications changes without notice.

6 Changi North Street 2, SINGAPORE 498831  
 e-mail: [info@denselight.com](mailto:info@denselight.com) ; website: [www.denselight.com](http://www.denselight.com)  
 Tel. 065-6415-7989 ; Fax. 065-6415-4465

**Step 7:** Without clicking OK or Cancel Button, select Driver Tab and click on Update Driver



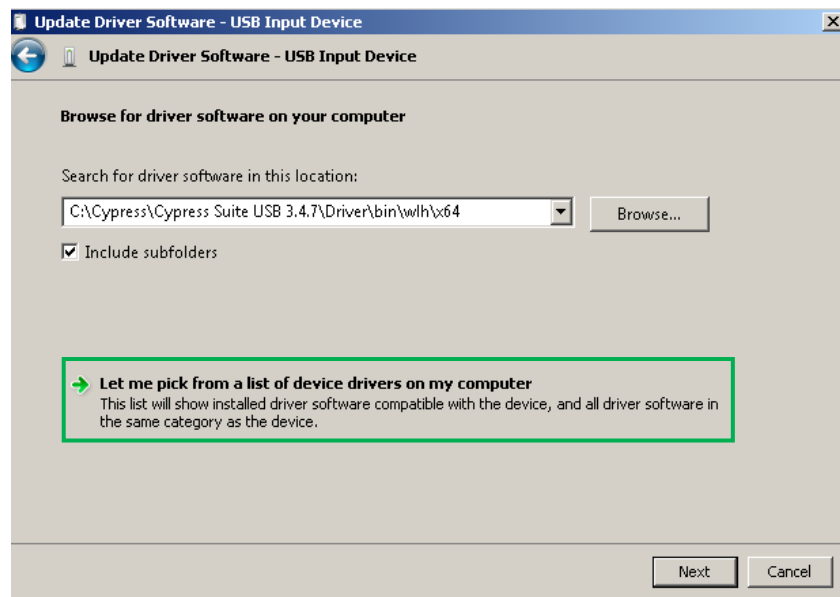
**Step 8:** Click on “Browse my computer for driver software”



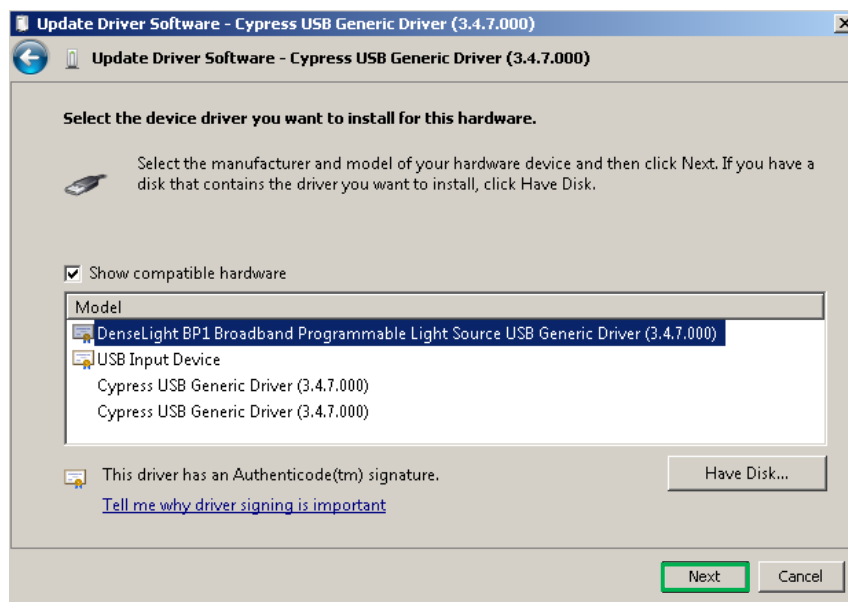
This document is the property of DenseLight Semiconductors Pte Ltd and contains confidential and proprietary information of DenseLight Semiconductors Pte Ltd. neither it nor the information contained therein shall be disclosed to others or used by other except as authorized by DenseLight Semiconductors Pte Ltd in writing. DenseLight Semiconductors reserves the right to make product design or specifications changes without notice.

6 Changi North Street 2, SINGAPORE 498831  
e-mail: [info@denselight.com](mailto:info@denselight.com) ; website: [www.denselight.com](http://www.denselight.com)  
Tel. 065-6415-7989 ; Fax. 065-6415-4465

**Step 9:** Click Browse and locate the folder which contains the driver files (.cat, .inf and .sys files), then click on “Let me pick from a list of device drivers on my computer”.



**Step 10:** Choose “DenseLight BP1 Broadband Programmable Light Source USB Generic Driver (3.4.7.000)” and click Next

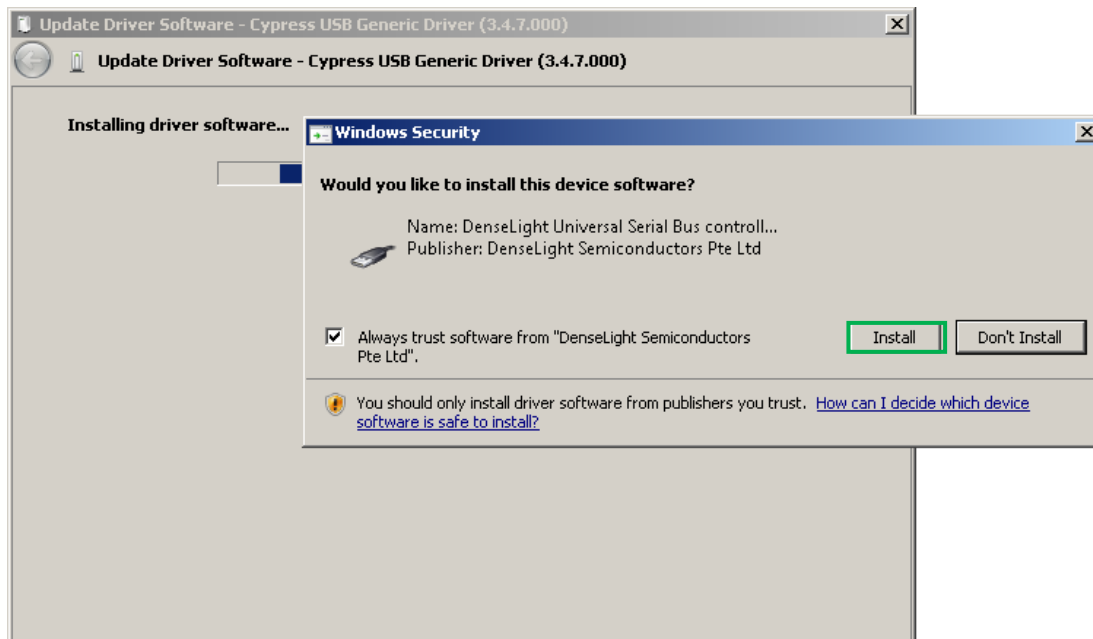


This document is the property of DenseLight Semiconductors Pte Ltd and contains confidential and proprietary information of DenseLight Semiconductors Pte Ltd. neither it nor the information contained therein shall be disclosed to others or used by other except as authorized by DenseLight Semiconductors Pte Ltd in writing. DenseLight Semiconductors reserves the right to make product design or specifications changes without notice.

6 Changi North Street 2, SINGAPORE 498831  
e-mail: [info@denselight.com](mailto:info@denselight.com) ; website: [www.denselight.com](http://www.denselight.com)  
Tel. 065-6415-7989 ; Fax. 065-6415-4465



**Step 11:** Tick “Always trust software from DenseLight Semiconductors Pte Ltd” and install the driver



**Step 12:** A message should appear saying “You have successfully installed the Driver SoftwareDenseLight BP1 Broadband Programmable Light Source USB Generic Driver (3.4.7.000)”

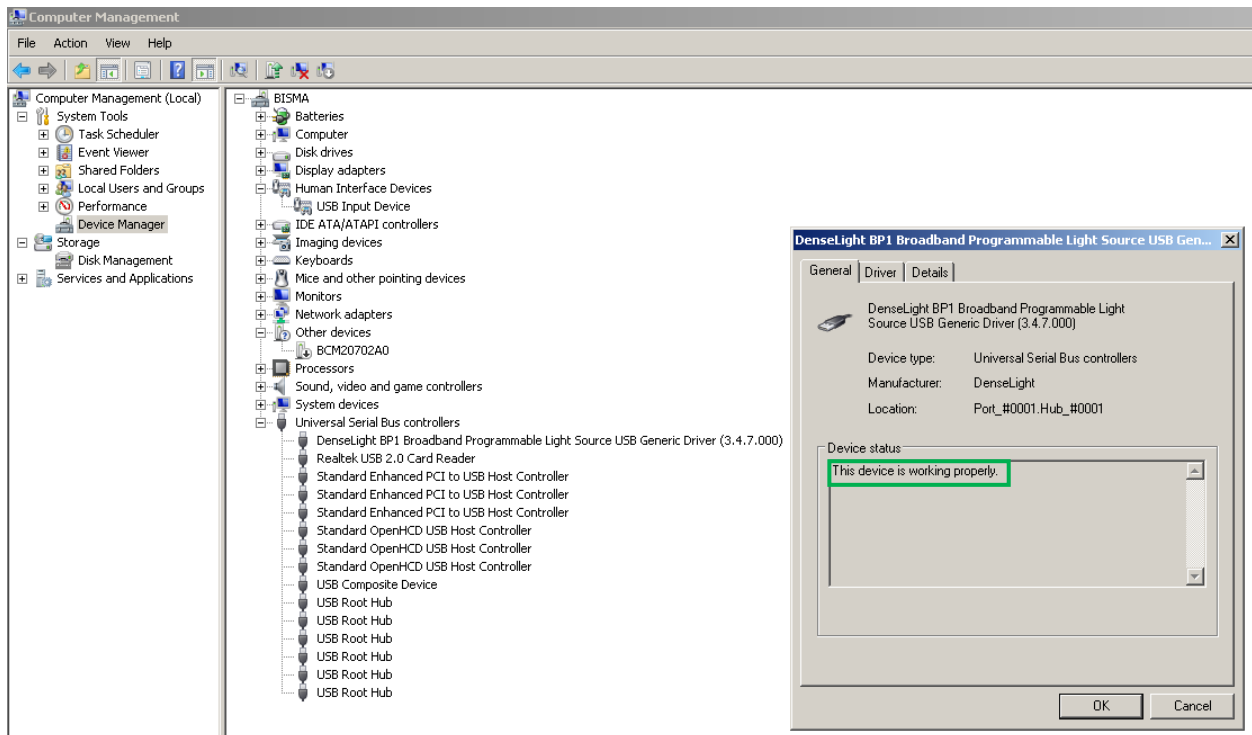


This document is the property of DenseLight Semiconductors Pte Ltd and contains confidential and proprietary information of DenseLight Semiconductors Pte Ltd. neither it nor the information contained therein shall be disclosed to others or used by other except as authorized by DenseLight Semiconductors Pte Ltd in writing. DenseLight Semiconductors reserves the right to make product design or specifications changes without notice.

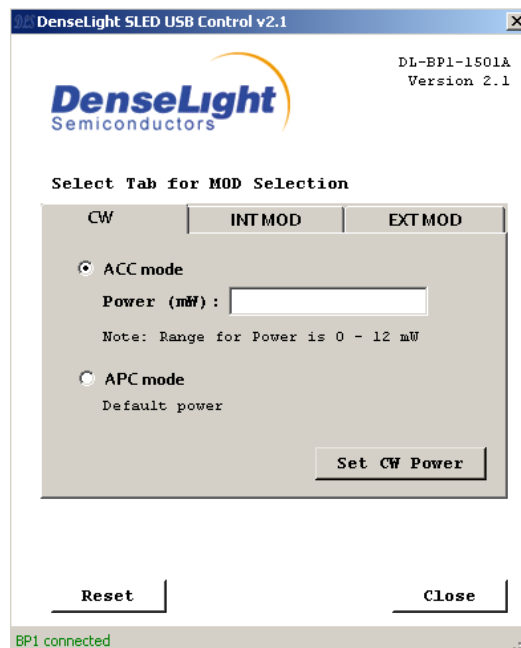
6 Changi North Street 2, SINGAPORE 498831  
e-mail: [info@denselight.com](mailto:info@denselight.com) ; website: [www.denselight.com](http://www.denselight.com)  
Tel. 065-6415-7989 ; Fax. 065-6415-4465

**Step 13:** To verify if the driver is installed correctly, go back to device manager and under Universal Serial Bus Controllers, see if “DenseLight BP1 Broadband Programmable Light Source USB Generic Driver (3.4.7.000)” appears.

Right click on “DenseLight BP1 Broadband Programmable Light Source USB Generic Driver (3.4.7.000)”; choose properties and you should see “The device is working properly” under the General Tab.



Connect BP1 ILM to PC and turn on the power supply. “BP1 connected” in green color should appear at lower left corner of GUI.



This document is the property of DenseLight Semiconductors Pte Ltd and contains confidential and proprietary information of DenseLight Semiconductors Pte Ltd. neither it nor the information contained therein shall be disclosed to others or used by other except as authorized by DenseLight Semiconductors Pte Ltd in writing. DenseLight Semiconductors reserves the right to make product design or specifications changes without notice.

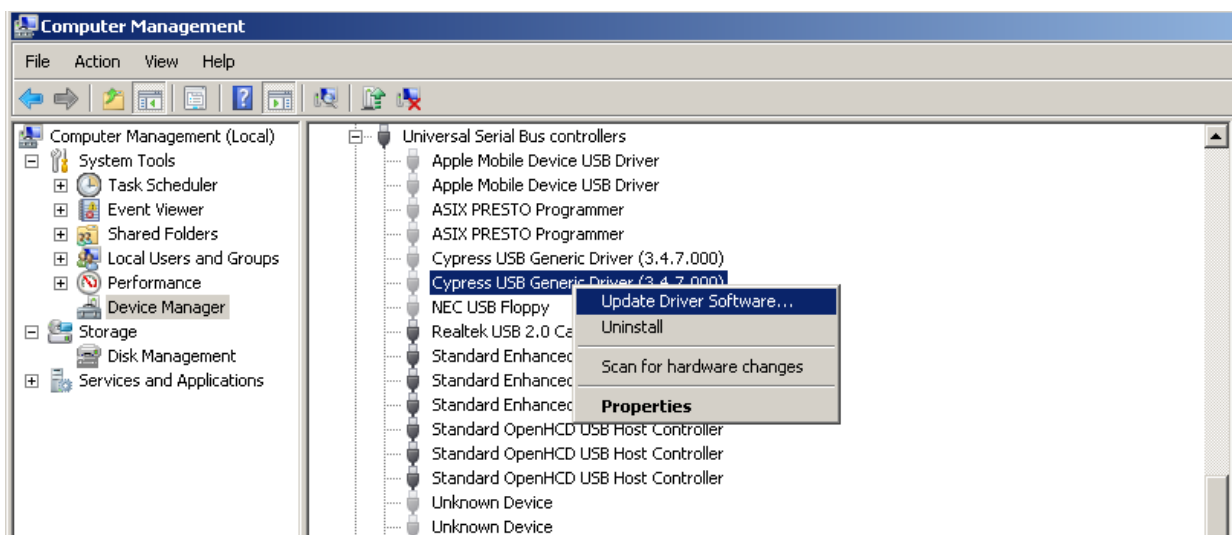
6 Changi North Street 2, SINGAPORE 498831  
e-mail: [info@denselight.com](mailto:info@denselight.com) ; website: [www.denselight.com](http://www.denselight.com)  
Tel. 065-6415-7989 ; Fax. 065-6415-4465

## BP1 USB Digitally Signed Driver Update

For end users who have previously installed the unsigned version of the BP1 USB Driver, you need to follow the instructions below to update the driver to signed version.

**Step 1:** Locate Cypress USB Generic Driver (3.4.7.000) inside Device Manager; right click on it, then select “Update Driver Software”

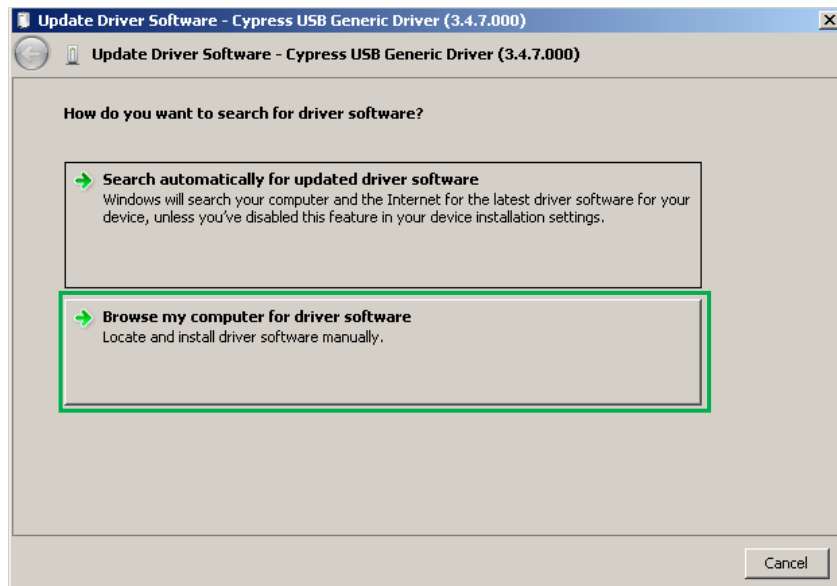
**Note:** User can also choose to uninstall previous unsigned driver then restart computer. After that, follow “Case 2” instructions below



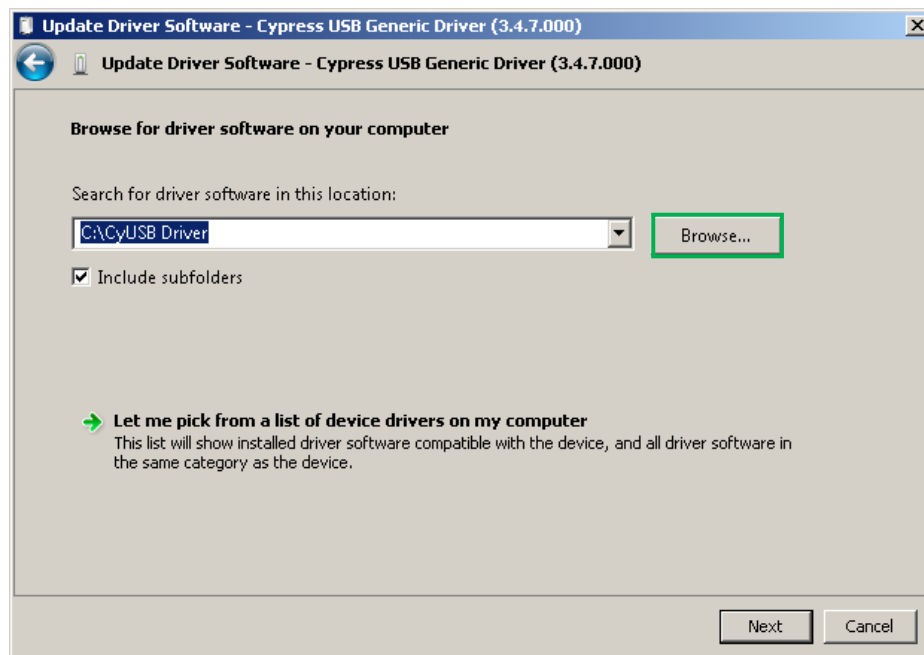
This document is the property of DenseLight Semiconductors Pte Ltd and contains confidential and proprietary information of DenseLight Semiconductors Pte Ltd. neither it nor the information contained therein shall be disclosed to others or used by other except as authorized by DenseLight Semiconductors Pte Ltd in writing. DenseLight Semiconductors reserves the right to make product design or specifications changes without notice.

6 Changi North Street 2, SINGAPORE 498831  
e-mail: [info@denselight.com](mailto:info@denselight.com) ; website: [www.denselight.com](http://www.denselight.com)  
Tel. 065-6415-7989 ; Fax. 065-6415-4465

**Step 2:** On the “Update Driver Software” Window, click on “Browse my computer for driver software”



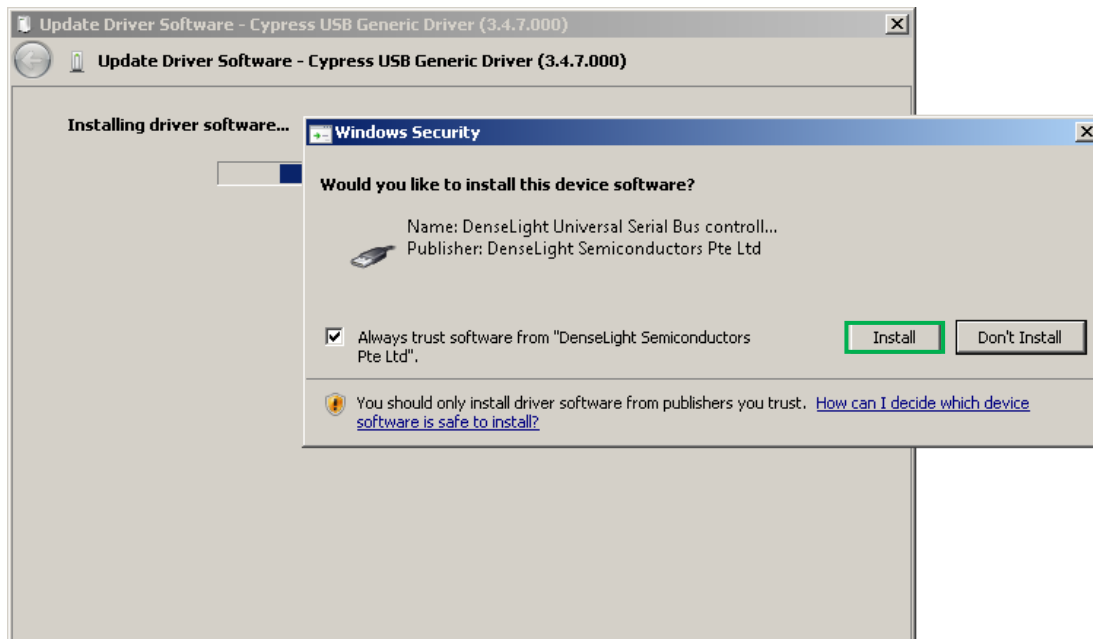
**Step 3:** Click Browse and locate the folder which contains **the driver files (.cat, .inf and .sys files)**, then click Next



This document is the property of DenseLight Semiconductors Pte Ltd and contains confidential and proprietary information of DenseLight Semiconductors Pte Ltd. neither it nor the information contained therein shall be disclosed to others or used by other except as authorized by DenseLight Semiconductors Pte Ltd in writing. DenseLight Semiconductors reserves the right to make product design or specifications changes without notice.

6 Changi North Street 2, SINGAPORE 498831  
e-mail: [info@denselight.com](mailto:info@denselight.com) ; website: [www.denselight.com](http://www.denselight.com)  
Tel. 065-6415-7989 ; Fax. 065-6415-4465

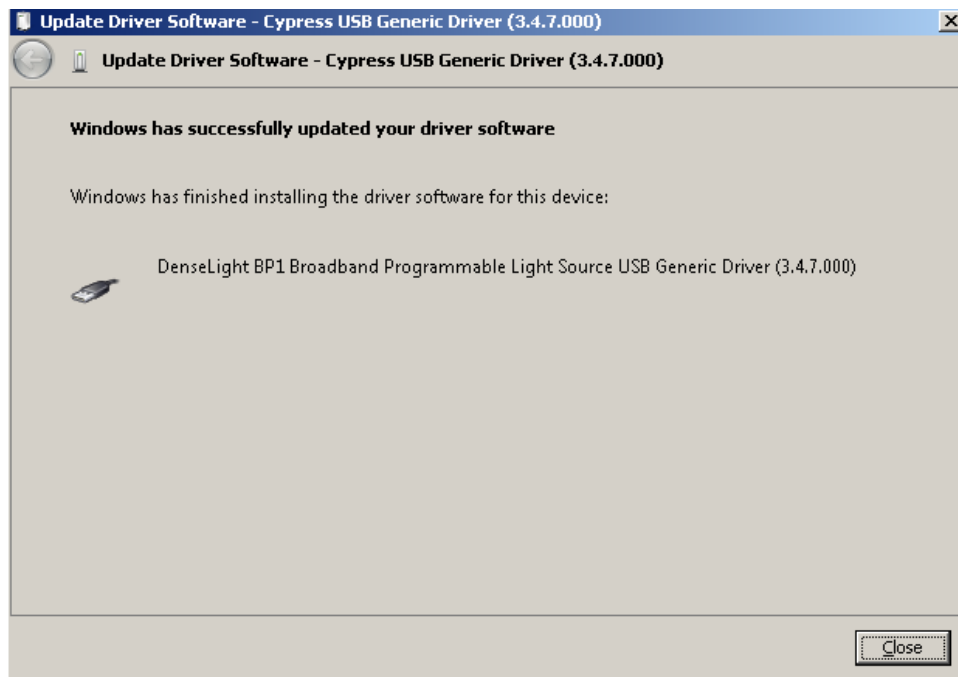
**Step 4:** Tick “Always trust software from DenseLight Semiconductors Pte Ltd” and install the driver



This document is the property of DenseLight Semiconductors Pte Ltd and contains confidential and proprietary information of DenseLight Semiconductors Pte Ltd. neither it nor the information contained therein shall be disclosed to others or used by other except as authorized by DenseLight Semiconductors Pte Ltd in writing. DenseLight Semiconductors reserves the right to make product design or specifications changes without notice.

6 Changi North Street 2, SINGAPORE 498831  
e-mail: [info@denselight.com](mailto:info@denselight.com) ; website: [www.denselight.com](http://www.denselight.com)  
Tel. 065-6415-7989 ; Fax. 065-6415-4465

**Step 5:** You have successfully updated the Driver Software to “DenseLight BP1 Broadband Programmable Light Source USB Generic Driver (3.4.7.000).”

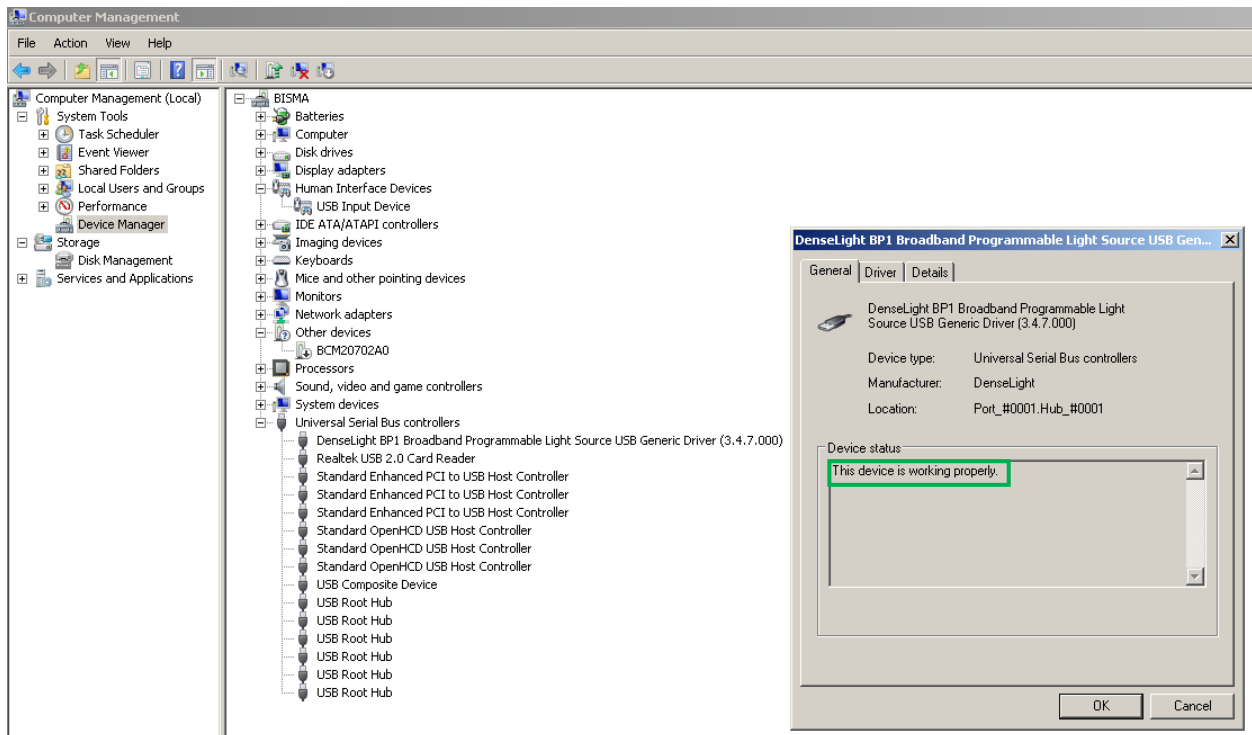


This document is the property of DenseLight Semiconductors Pte Ltd and contains confidential and proprietary information of DenseLight Semiconductors Pte Ltd. neither it nor the information contained therein shall be disclosed to others or used by other except as authorized by DenseLight Semiconductors Pte Ltd in writing. DenseLight Semiconductors reserves the right to make product design or specifications changes without notice.

6 Changi North Street 2, SINGAPORE 498831  
e-mail: [info@denselight.com](mailto:info@denselight.com) ; website: [www.denselight.com](http://www.denselight.com)  
Tel. 065-6415-7989 ; Fax. 065-6415-4465

**Step 6:** To verify if the driver is installed correctly, go back to device manager and under Universal Serial Bus Controllers, see if “DenseLight BP1 Broadband Programmable Light Source USB Generic Driver (3.4.7.000)” appears.

Right click on “DenseLight BP1 Broadband Programmable Light Source USB Generic Driver (3.4.7.000)” ; choose properties and you should see “The device is working properly” under the General Tab.



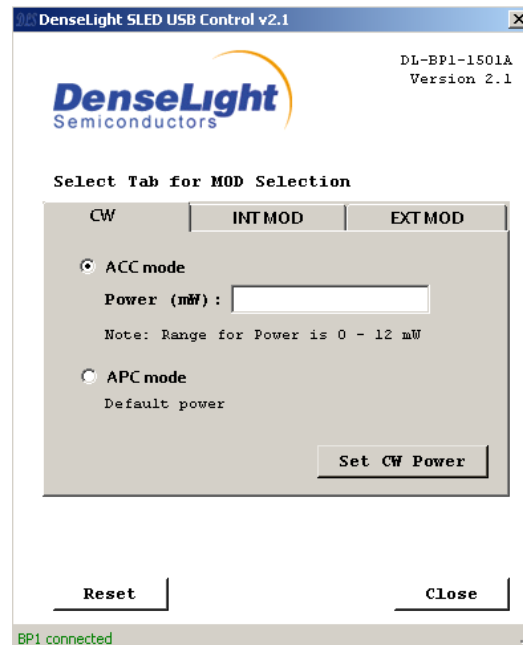
This document is the property of DenseLight Semiconductors Pte Ltd and contains confidential and proprietary information of DenseLight Semiconductors Pte Ltd. neither it nor the information contained therein shall be disclosed to others or used by other except as authorized by DenseLight Semiconductors Pte Ltd in writing. DenseLight Semiconductors reserves the right to make product design or specifications changes without notice.

6 Changi North Street 2, SINGAPORE 498831  
e-mail: [info@denselight.com](mailto:info@denselight.com) ; website: [www.denselight.com](http://www.denselight.com)  
Tel. 065-6415-7989 ; Fax. 065-6415-4465



Plug in USB Cable from BP1 to PC, and power on the BP1. “BP1 connected” in green color should appear at lower left corner of GUI.

As updated driver is digitally signed, user will no longer need to disable the Driver Signature Enforcement in their Windows operating system



This document is the property of DenseLight Semiconductors Pte Ltd and contains confidential and proprietary information of DenseLight Semiconductors Pte Ltd. neither it nor the information contained therein shall be disclosed to others or used by other except as authorized by DenseLight Semiconductors Pte Ltd in writing. DenseLight Semiconductors reserves the right to make product design or specifications changes without notice.

6 Changi North Street 2, SINGAPORE 498831  
e-mail: [info@denselight.com](mailto:info@denselight.com) ; website: [www.denselight.com](http://www.denselight.com)  
Tel. 065-6415-7989 ; Fax. 065-6415-4465